


ASH AT WORK

PUBLISHED BY NATIONAL ASH ASSOCIATION, 1819 H STREET NW, WASHINGTON, D.C. 20006

 Printed on recycled paper.

Vol. XV

1983

No. 1

Plumb Elevated To NAA Presidency

WASHINGTON—James P. Plumb of Houston, TX, is the new president of the National Ash Association. He was elevated to the post at the NAA's annual meeting here to succeed Gerald W. Bowdren of Newark, NJ.

The new president is Manager-Purchasing for Houston Lighting & Power Company and previously served as vice president of the ash industry's trade association.

Bowdren, who is Manager-Technical Support for Public Service Electric & Gas Company, will remain active in the association as a member of the Executive Committee for the coming year.

Other members of the management team include Vice President John R. Dorsett of Dallas, TX, Texas Utilities Generating Company; Vice President Stephen Benza of Allentown, PA, Pennsylvania Power & Light Company; Vice President Joe Mullan of Washington, National Coal Association; Secretary-Treasurer Allan W. Babcock of Fairmont, WV, Monongahela Power Co.; Assistant Secretary-Treasurer Donald Ward of Baltimore, MD, Baltimore Gas & Electric Company.

The NAA did not renew the contract of James N. Covey as Executive Director. Mr. Mullan was named to head a search committee to interview applicants for the job.

In addition to the newly-elected officers and Mr. Bowdren, nominees to the Executive Committee overseeing the day-to-day operation of the Association were Ronald E. Morrison of Charleston, WV, American Electric Power Service Corporation; James E. Davis of New York, Allegheny Power System; Charles E. Shelton of Richmond, VA, Virginia Electric & Power Company; James Brunner of Jackson, MI, Consumers Power Company; and Bart Thomas of Marietta, GA, J.T.M. Industries, Inc.

Thomas represents the Ash Marketing Council on the Executive Committee. Jack Weber of Glastonbury, CT, is the Council's liaison to the Board of Directors.

Ash Short Course Set For Nov. 6-9

BATON ROUGE, LA—Applications are being accepted for an Ash Short Course to be held on the campus of Louisiana State University from November 6-9.

The program, being co-sponsored by the NAA and the LSU College of Engineering, will focus on the latest data on the technology and utilization of power plant ash.

Dr. Roger K. Seals, chairman of the Civil Engineering Department, is directing the development of the curriculum. Subjects will include ash management and quality control, basic utilization skills, balancing applications with the environment.

Enrollment will be limited to 100. The program is designed for persons with either technical or non-technical backgrounds in the electric utility, road construction, and ash industry fields.

Aaron Selected As Technical Director

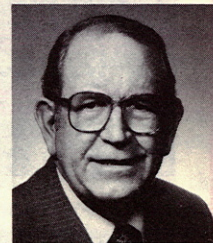
WASHINGTON—The appointment of Roy Aaron of Mundelein, Illinois to the position of technical director for the National Ash Association has been announced by President James P. Plumb.

President Plumb said Aaron's primary function will be to service the membership in the area of ash management and the marketing of power plant ash.

The 54-year-old Illinois native will also represent the NAA on various ASTM and ACI technical committees and act as a liaison to the Federal Highway Administration, Environmental Protection Agency, Soil Conservation Service, Office of Surface Mining, Federal Aviation Administration and other Washington-based agencies.

He will also work with highway officials and affiliated ASHTO and ARBA representatives at the state and

(Continued on Page 4)



Re-establishment of 'Washington Connection' Is Listed As Major Goal of New President

The re-establishment of the National Ash Association as the "Washington Connection" for the ash industry was one of the major goals listed by President James P. Plumb in his acceptance remarks at the NAA's annual meeting.

"We are going to aggressively try to restore our credibility with the various regulatory bodies and other Federal agencies that might influence or specify the use of power plant ash in construction applications," Plumb stated.

The president added the same emphasis would apply to the many ASTM, ACI, or other technical committees and allied organizations such as the EEI's Resource Recovery & Utilization

Committee and Electric Power Research Institute (EPRI).

"We have a long-standing and deep commitment in this area and we will encourage our members to become and remain actively involved in their programs," he related.

The recruitment of new utility members will also receive special attention, Plumb observed. "Every electric utility operating a coal-fired generating station or contemplating a conversion to fossil fuel is a potential member and we must find a way to get their attention and acquaint them with the importance of ash management and the economic

(Continued on page 3)

NAA Annual Meeting



President Bowdren delivers annual message.



MARKETERS HAVE VP'S EAR - VP Joe Mullan (center) of National Coal Association listens intently as Doug Barnett (left) of Virginia Electric & Power Company and Mitch Nowicki (right) of American Fly Ash Co. discuss the use of power plant ash.



SALES PITCH - Ron Morrison of American Electric Power Service Corp. (standing) is discussing ash marketing efforts with Craig Cain (left) of American Fly Ash Co., and Jerry Gordon (center) of Monier Resources, Inc.



NAA OFFICERS FOR 1983-84 - The officers chosen to direct the affairs of the NAA during the coming year pose with President Plumb. They are (left to right) Ass't. Secretary-Treasurer Don Ward, Vice President Joe Mullan, President Plumb, Vice President John Dorsett, Vice President Steve Benza, Secretary-Treasurer Allan W. Babcock.



TALKING SHOP - Kenneth Blasko (left) of Allegheny Power System is depicted "talking shop" with Walt Morris of PPA of Iowa during a coffee break.



ATTENTIVE AUDIENCE - President Bowdren emphasizes a point in his "state of the association" remarks before an attentive audience at the annual meeting.



PRESENTATION - President Plumb (right) is shown presenting an appreciation plaque to outgoing Prexy Gerry Bowdren.

Financing Sought For Standard Test Program

WASHINGTON—The National Bureau of Standards is seeking support for the development of criteria for a standard sample of fly ash to allow for analysis with wet atomic absorption equipment.

Ash producers and marketers interested in making a financial commitment toward the project are asked to contact the NAA offices here. A goal of \$20,000 has been set for the program in increments of \$1,000.

The ultimate objective is to gain acceptance of atomic absorption methodology for the testing of fly ash for compliance with ASTM C-618 standards.

Re-Establishment

(Continued from Page 1)

benefits of utilizing and marketing power plant ash," he reiterated.

This effort will be carried out by a Membership Task Force headed by John Dorsett of Texas Utilities Generating Company based in Dallas.

President Plumb said the availability of Technical Director Roy Aaron gives our program a new dimension it has been lacking for several years. "We are now in a position, or soon will be, to offer direct technical assistance to the membership," he asserted.

However, the top immediate objective will be the filling of the NAA's day-to-day administrative post.

Vice President Joseph Mullan, representing the National Coal Association, is chairman of the Search Committee. "We hope to have a replacement on-board within 60 days," Mullan reported.

And, finally, the new president noted he would work closely with the association's Ash Marketing Council to pursue the increased acceptance and utilization of power plant ash.

The Council recommended the development of new promotional literature that can be distributed at trade shows as well as an update of technical data on Ash applications. Mr. Plumb responded that an Ash reference manual is being prepared for distribution to members depicting the formation of Ash, various uses of the coal by-products, a listing of sources of supply by generating stations and marketing representatives.

The new president emphasized the geographical make-up of the Executive Committee make it imperative that the sub-committees function effectively and maintain open lines of communications at all times.

HERE & THERE

WASHINGTON—The National Ash Association's Seventh International Ash Utilization Symposium will be held March 4-7, 1985, according to President James P. Plumb.

The event is to be staged at the Sheraton-Twin Towers in Orlando, Florida. The convention booking agreement includes a companion contract for exhibition space.

Secretary Allan W. Babcock is to serve as general chairman for the four-day program.

* * * * *

PHOENIX—BMI Limited of Australia has purchased 100 percent of the shares of Western Ash Company - a fly ash distributor based here.

The transaction also incorporated the Rocky Mountain Ash Company of which Western was the managing partner. The two firms serve markets in a seven state area including Arizona, California, Colorado, New Mexico, Nevada, Utah and Wyoming.

R.J. Morrison continues as president and chief executive of the new company.

* * * * *

LEXINGTON, KY—Kentucky Utilities Company has installed storage facilities at two of its coal-fired electric generating stations to implement an ash marketing program.

One thousand ton fly ash silos are now in place at the firm's Ghent Station in Carroll County and E.W. Brown Station in Mercer County.

A major outlet is the ready-mix concrete market.

* * * * *

FORT WORTH, TX—DelVal, Inc., specialists in pressure grouting, have consolidated their offices here, according to President John DelVal. The address is P.O. Box 18068.

The firm previously operated in the Portland, OR area.

* * * * *

MARIETTA, GA—Jerry L. Heavilon has joined JTM Industries, Inc. as director of Corporate Engineering. JTM is active in the sale and distribution of bottom ash and fly ash here and in the Houston, TX area.

Heavilon will assist in the construction and operation of existing and planned facilities. He formerly owned Heavilon and Associates.

NAA LAUNCHES SURVEY ON ROAD USE OF ASH

WASHINGTON — The National Ash Association has launched a nation-wide survey among highway and transportation officials to determine the acceptance and use of power plant ash in road construction.

Technical Director Roy Aaron said the purpose of the program is to collect data that can be utilized to develop guidelines for the expanded use of ash in the maintenance and construction of nation's highway network.

One of the major objectives is to determine which states have used fly ash, bottom ash, or boiler slag on construction projects and to identify those who have standard specifications for the use of ash.

A similar survey conducted by the NAA in 1975 noted that 30 states permitted the use of ash in some form.

"We had a 100 percent return from state highway departments at that time," Aaron related, "and we have every reason to believe we will get a good response this time as well because budgetary constraints are causing highway engineers to become more innovative and to seek low-cost alternatives."

The report form was developed by the NAA's Technical Committee in concert with the Federal Highway Administration.

The FHWA has endorsed the use of power plant ash on projects where it is "economically and technically feasible to do so."

In a recent report to members, Aaron noted 11 demonstration projects using ash where funded under the FHWA Project 59 Program in fiscal year 1982. These projects primarily involved roadbase utilization.

FILMS STILL AVAILABLE

Copies of the film titled "Power Plant Ash - A Resourceful Alternative" are available for sale or rent through the offices of the National Ash Association.

The 27-minute documentary traces the recycling of ash from the coal mine - to the power station - to various construction applications. It is suitable for the knife-and-fork civic club circuit or technical presentations to engineers and consultants.

Members may purchase the film at \$365, including shipping and handling, or rent the film for three days at \$165. The price to non-members is \$485.

Arkansas Plant Board Views White Bluff Ash As Low-Cost Alternative To Ag Lime There

LITTLE ROCK, AR—The use of fly ash as a low cost alternative to agricultural lime for farmers in south central Arkansas is close at hand.

Based on a three-year research program funded by the Arkansas Power & Light Company and conducted by the Agronomy Department at the University of Arkansas, the Arkansas State Plant Board has granted the utility a license for the sale of White Bluff Station fly ash as a liming material.

According to Chemical Engineer Gary Davis, the study results indicated fly ash is an effective liming material with a fast neutralization reaction in the slightly acidic soil to correct low pH.

On a ton-to-ton comparison basis with agricultural lime, the fly ash proved to be nearly as effective with little or no significant difference on a dry matter production basis for bermuda grass, legumes, and tall fescue sod field plots, Davis explained.

The study is continuing to ensure there will be no adverse, long-term effects, he added.

The utility spokesman noted the ash also shows promise for reclaiming acidic mine spoil left from mining activities in Arkansas. To neutralize the acidity in these soils, over fifty tons per acre is required, Davis concluded.

In addition to controlling the pH of the spoil, the fly ash increases the moisture holding capacity of the material. These results confirm earlier findings of the U.S. Bureau of Mines in experiments with bituminous ash in Ohio, West Virginia and Pennsylvania.

The utility has also entered into a contract with Chem-Ash, Inc. of Redfield, Arkansas to assist in marketing the White Bluff ash. The station, which burns sub-bituminous Wyoming coal, produces about 300,000 tons of fly ash and 60,000 tons of bottom ash annually. The physical and chemical make-up of the ash characterize it as being borderline between a Class C and a Class F ash. Additionally, the first of a pair of identical coal-fired units is now on stream at its Independence Station with the second scheduled to be operational in early 1985.

The Arkansas Highway and Transportation Department has approved the use of fly ash as a mineral filler in asphaltic hot and cold mix pavings, Davis noted.

Bill Rogers of Chem-Ash is working to expand the construction market opportunities for the White Bluff and Independence ashes for partial cement replacement in concrete and in the production of lightweight aggregate.

The goal of the AP&L's ash management program is to achieve 100 percent utilization. In 1982, the utility marketed 33 percent of the fly ash and bottom ash produced at White Bluff representing a 100 + percent increase in sales compared to 1981 figures.

This ambitious program underlines the monumental price tag for ash disposal which AP&L estimates at nearly \$2.0 million annually without utilization. In addition to wasting a valuable resource, hundreds of acres of land would have to set aside for ash disposal.

CALENDAR OF EVENTS

1983

JUNE

- 2 USWAG, RR&U Committee Meeting, Washington, DC
- 19-24 ASTM June Meeting, Kansas City, MO
- 22-25 6th International Conference on Alkalis in Concrete, Technical University, Copenhagen, Denmark
- 24-28 3rd Annual Conference on Low Volume Roads, TRB, Arizona State University, Tempe, AR
- 28 NAA Executive Committee Meeting, Washington, DC

JULY-AUGUST

- 31-5 1st International Conference on the Use of Fly Ash, Silica Fume, Slag, and Other Mineral By-Products in Concrete, Quebec, Canada

SEPTEMBER

- 18-21 ARTBA National Conference on Local Transportation-Stabilization, Rehabilitation, and Recycling Committee, Peoria, IL
- 24-30 ACI Fall Meeting, Kansas City, MO

NOVEMBER

- 6-9 Ash Short Course, Technology & Utilization of Power Plant Ash, Louisiana State University, Baton Rouge, LA
- 15-17 6th International Coal Utilization Exhibition & Conference, Astro Hall, Houston, TX.



ASH MANAGEMENT - Dennis L. Kinder (second from right) explains American Electric Power Service Corporation's ash management program to NAA Technical Director Roy Aaron (right) during a visit to AEP's John Amos Station as a part of the latter's ash indoctrination program. Assisting in the two-day presentation were Ash Engineer Rusty Nida and William (Red) Clay who supervises the station's ash handling and disposal operations.

Aaron Selected

(Continued from Page 1)

local level on specification problems relative to the use of ash in road construction.

Aaron, a graduate of the University of Illinois and a registered professional engineer, has been affiliated with the concrete pipe industry for the past 20 years. Most recently, he served as a sales engineer for the Chicago Pre-Cast Products Company.

The NAA official added Aaron's selection climaxed a lengthy search for a development engineer and fills a long-standing void in the organization's structure.

The new director is currently undergoing an intensive orientation program and generally acquainting himself with the work of the trade association, Plumb stated.